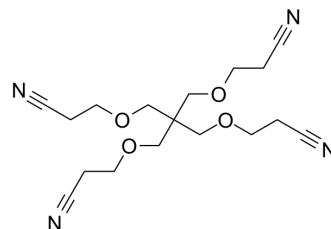


Tetra(cyanoethoxymethyl) methane

Cat. No.:	HY-124531
CAS No.:	2465-91-0
Molecular Formula:	C ₁₇ H ₂₄ N ₄ O ₄
Molecular Weight:	348.4
Target:	PROTAC Linkers
Pathway:	PROTAC
Storage:	Please store the product under the recommended conditions in the Certificate of Analysis.



BIOLOGICAL ACTIVITY

Description	Tetra(cyanoethoxymethyl) methane is an alkyl chain-based PROTAC linker that can be used in the synthesis of PROTACs ^[1] .
IC ₅₀ & Target	Alkyl-Chain
In Vitro	PROTACs contain two different ligands connected by a linker; one is a ligand for an E3 ubiquitin ligase and the other is for the target protein. PROTACs exploit the intracellular ubiquitin-proteasome system to selectively degrade target proteins ^[1] . MCE has not independently confirmed the accuracy of these methods. They are for reference only.

REFERENCES

[1]. An S, et al. Small-molecule PROTACs: An emerging and promising approach for the development of targeted therapy drugs. EBioMedicine. 2018 Oct;36:553-562

Caution: Product has not been fully validated for medical applications. For research use only.

Tel: 609-228-6898

Fax: 609-228-5909

E-mail: tech@MedChemExpress.com

Address: 1 Deer Park Dr, Suite Q, Monmouth Junction, NJ 08852, USA