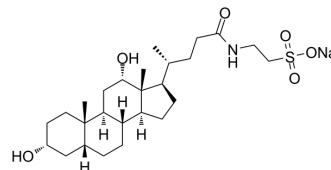


Taurodeoxycholate sodium salt

Cat. No.:	HY-128853
CAS No.:	1180-95-6
Molecular Formula:	C ₂₆ H ₄₄ NNaO ₆ S
Molecular Weight:	522
Target:	Endogenous Metabolite
Pathway:	Metabolic Enzyme/Protease
Storage:	4°C, sealed storage, away from moisture * In solvent : -80°C, 6 months; -20°C, 1 month (sealed storage, away from moisture)



SOLVENT & SOLUBILITY

In Vitro	DMSO : 100 mg/mL (191.57 mM; Need ultrasonic)					
	Preparing Stock Solutions	Solvent Concentration	Mass	1 mg	5 mg	10 mg
		1 mM		1.9157 mL	9.5785 mL	19.1571 mL
		5 mM		0.3831 mL	1.9157 mL	3.8314 mL
		10 mM		0.1916 mL	0.9579 mL	1.9157 mL
Please refer to the solubility information to select the appropriate solvent.						
In Vivo	<ol style="list-style-type: none"> Add each solvent one by one: 10% DMSO >> 40% PEG300 >> 5% Tween-80 >> 45% saline Solubility: ≥ 2.08 mg/mL (3.98 mM); Clear solution Add each solvent one by one: 10% DMSO >> 90% (20% SBE-β-CD in saline) Solubility: ≥ 2.08 mg/mL (3.98 mM); Clear solution Add each solvent one by one: 10% DMSO >> 90% corn oil Solubility: ≥ 2.08 mg/mL (3.98 mM); Clear solution 					

BIOLOGICAL ACTIVITY

Description	Taurodeoxycholate sodium salt is a bile salt-related anionic detergent used for isolation of membrane proteins including inner mitochondrial membrane proteins. Taurodeoxycholate (TDCA) inhibits various inflammatory responses ^{[1] [2][3]} .
--------------------	--

CUSTOMER VALIDATION

- Research (Wash D C). 2022 Nov 2;2022:9784081.

See more customer validations on www.MedChemExpress.com

REFERENCES

- [1]. Villavicencio-Queijeiro A, et al. The fully-active and structurally-stable form of the mitochondrial ATP synthase of *Polytomella* sp. is dimeric. *J Bioenerg Biomembr.* 2009 Feb;41(1):1-13.
- [2]. Kispal G, et al. Isolation and characterization of 3-hydroxyacyl coenzyme A dehydrogenase-binding protein from pig heart inner mitochondrial membrane. *J Biol Chem.* 1986 Oct 25;261(30):14209-13.
- [3]. Choi HJ, et al. Evaluation of acute and subacute toxicity of sodium taurodeoxycholate in rats. *Drug Chem Toxicol.* 2019 Jun 19:1-9.
-

Caution: Product has not been fully validated for medical applications. For research use only.

Tel: 609-228-6898

Fax: 609-228-5909

E-mail: tech@MedChemExpress.com

Address: 1 Deer Park Dr, Suite Q, Monmouth Junction, NJ 08852, USA