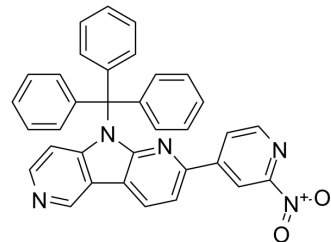


Tau tracer 1

Cat. No.:	HY-134879
CAS No.:	2173353-53-0
Molecular Formula:	C ₃₄ H ₂₃ N ₅ O ₂
Molecular Weight:	533.58
Target:	Microtubule/Tubulin
Pathway:	Cell Cycle/DNA Damage; Cytoskeleton
Storage:	Please store the product under the recommended conditions in the Certificate of Analysis.



BIOLOGICAL ACTIVITY

Description	Tau tracer 1 is a Tau tracer used for imaging Tau protein aggregates. Tau tracer 1 can be used to diagnose neurodegenerative diseases ^[1] .
In Vitro	Tau tracer 1 (compound 13) can be employed in the selective Tau detection of disorders and abnormalities associated with Tau aggregates such as Alzheimer's disease and other tauopathies using Positron Emission Tomography (PET) Imaging ^[1] . MCE has not independently confirmed the accuracy of these methods. They are for reference only.

REFERENCES

[1]. Heiko Kroth, et al. Compounds for imaging tau protein aggregates. WO2018015549A1.

Caution: Product has not been fully validated for medical applications. For research use only.

Tel: 609-228-6898

Fax: 609-228-5909

E-mail: tech@MedChemExpress.com

Address: 1 Deer Park Dr, Suite Q, Monmouth Junction, NJ 08852, USA