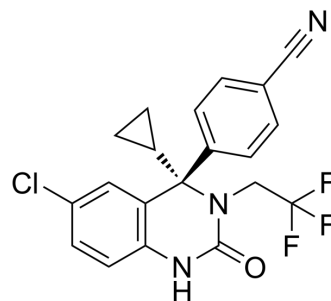


TTA-Q6(isomer)

Cat. No.:	HY-10388A		
CAS No.:	910484-32-1		
Molecular Formula:	C ₂₀ H ₁₅ ClF ₃ N ₃ O		
Molecular Weight:	405.8		
Target:	Calcium Channel		
Pathway:	Membrane Transporter/Ion Channel; Neuronal Signaling		
Storage:	Powder	-20°C	3 years
	In solvent	-80°C	6 months
		-20°C	1 month



SOLVENT & SOLUBILITY

In Vitro	DMSO : 125 mg/mL (308.03 mM; Need ultrasonic)				
		Solvent Concentration	Mass 1 mg	5 mg	10 mg
	Preparing Stock Solutions	1 mM	2.4643 mL	12.3213 mL	24.6427 mL
		5 mM	0.4929 mL	2.4643 mL	4.9285 mL
		10 mM	0.2464 mL	1.2321 mL	2.4643 mL
Please refer to the solubility information to select the appropriate solvent.					
In Vivo	1. Add each solvent one by one: 10% DMSO >> 40% PEG300 >> 5% Tween-80 >> 45% saline Solubility: ≥ 2.08 mg/mL (5.13 mM); Clear solution 2. Add each solvent one by one: 10% DMSO >> 90% corn oil Solubility: ≥ 2.08 mg/mL (5.13 mM); Clear solution				

BIOLOGICAL ACTIVITY

Description	TTA-Q6(isomer) is an isomer of TTA-Q6. TTA-Q6 is a selective T-type Ca ²⁺ channel antagonist.
IC₅₀ & Target	T-type calcium channel

Caution: Product has not been fully validated for medical applications. For research use only.

Tel: 609-228-6898

Fax: 609-228-5909

E-mail: tech@MedChemExpress.com

Address: 1 Deer Park Dr, Suite Q, Monmouth Junction, NJ 08852, USA