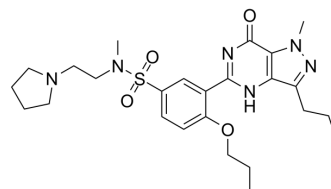


TPN729

Cat. No.:	HY-116808
CAS No.:	936951-20-1
Molecular Formula:	C ₂₅ H ₃₆ N ₆ O ₄ S
Molecular Weight:	516.66
Target:	Phosphodiesterase (PDE)
Pathway:	Metabolic Enzyme/Protease
Storage:	Please store the product under the recommended conditions in the Certificate of Analysis.



BIOLOGICAL ACTIVITY

Description	TPN729 is a selective phosphodiesterase type 5 (PDE5) inhibitor with an IC ₅₀ value of 2.28 nM. TPN729 affects erectile function and it can be used for the research of erectile dysfunction ^[1] .											
IC₅₀ & Target	PDE5 2.28 nM (IC ₅₀)	PDE6 45.2 nM (IC ₅₀)	PDE1 566 nM (IC ₅₀)	PDE4 834 nM (IC ₅₀)								
	PDE11 6090 nM (IC ₅₀)											
In Vivo	<p>TPN729 (1.25, 2.5 and 5.0 mg/kg; intraduodenal injection, once) increases intracavernous pressure/blood pressure (ICP/BP) with the dose of 5.0 mg/kg at all time points and with the dose of 2.5 mg/kg at 75, 90, 105, and 120 minutes time points^[1]. TPN729 (5.0 µg/kg; i.v., once) significantly increases ICP and ICP/BP of male Beagle dogs^[1]. MCE has not independently confirmed the accuracy of these methods. They are for reference only.</p> <table border="1"> <tr> <td>Animal Model:</td> <td>Male Sprague-Dawley rats with corpora cavernosa complete exposure^[1]</td> </tr> <tr> <td>Dosage:</td> <td>1.25, 2.5 and 5.0 mg/kg</td> </tr> <tr> <td>Administration:</td> <td>Intraduodenal (i.d.) injection; 1.25, 2.5 and 5.0 mg/kg, once</td> </tr> <tr> <td>Result:</td> <td>Dose-dependently increased the maximum intracavernous pressure (ICP) and ICP/blood pressure (BP).</td> </tr> </table>				Animal Model:	Male Sprague-Dawley rats with corpora cavernosa complete exposure ^[1]	Dosage:	1.25, 2.5 and 5.0 mg/kg	Administration:	Intraduodenal (i.d.) injection; 1.25, 2.5 and 5.0 mg/kg, once	Result:	Dose-dependently increased the maximum intracavernous pressure (ICP) and ICP/blood pressure (BP).
Animal Model:	Male Sprague-Dawley rats with corpora cavernosa complete exposure ^[1]											
Dosage:	1.25, 2.5 and 5.0 mg/kg											
Administration:	Intraduodenal (i.d.) injection; 1.25, 2.5 and 5.0 mg/kg, once											
Result:	Dose-dependently increased the maximum intracavernous pressure (ICP) and ICP/blood pressure (BP).											

REFERENCES

[1]. Wang Z, et al. The selectivity and potency of the new PDE5 inhibitor TPN729MA. J Sex Med. 2013 Nov;10(11):2790-7.

Caution: Product has not been fully validated for medical applications. For research use only.

Tel: 609-228-6898

Fax: 609-228-5909

E-mail: tech@MedChemExpress.com

Address: 1 Deer Park Dr, Suite Q, Monmouth Junction, NJ 08852, USA