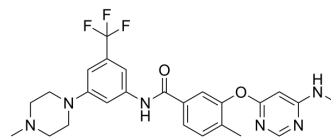


TL4-12

| | |
|---------------------------|--|
| Cat. No.: | HY-123714 |
| CAS No.: | 1620820-12-3 |
| Molecular Formula: | C ₂₅ H ₂₇ F ₃ N ₆ O ₂ |
| Molecular Weight: | 500.52 |
| Target: | MAP4K; Apoptosis |
| Pathway: | MAPK/ERK Pathway; Apoptosis |
| Storage: | -20°C, sealed storage, away from moisture * In solvent : -80°C, 6 months; -20°C, 1 month (sealed storage, away from moisture) |



SOLVENT & SOLUBILITY

In Vitro

DMSO : 8.33 mg/mL (16.64 mM); ultrasonic and warming and heat to 60°C

| Solvent | Mass | Concentration | | |
|---------------------------|-------|---------------|-----------|------------|
| | | 1 mg | 5 mg | 10 mg |
| Preparing Stock Solutions | 1 mM | 1.9979 mL | 9.9896 mL | 19.9792 mL |
| | 5 mM | 0.3996 mL | 1.9979 mL | 3.9958 mL |
| | 10 mM | 0.1998 mL | 0.9990 mL | 1.9979 mL |

Please refer to the solubility information to select the appropriate solvent.

BIOLOGICAL ACTIVITY

Description

TL4-12 is a selective MAP4K2/GCK inhibitor, dose-dependently downregulates IKZF1 and BCL-6 and leads to MM cell proliferation inhibition (IC₅₀=37 nM) accompanied by induction of apoptosis. TL4-12 can be used to overcome immunomodulatory agent resistance in multiple myeloma (MM)^[1].

In Vitro

TL4 12 (0-5 μM; 4 days) shows antiproliferation activity with an IC₅₀ value of 37 nM for MM cells, and with IC₅₀s of 1.62, 3.7, 4.4, 5.7, 10, 32, 49, 19 μM for JJN3, MM1.S, H929, RPMI-8226, MOLP-8, SKMM2, LP-1, U266 cells, respectively^[1]. TL4-12 (0, 1, 3 μM; 24 h) dose-dependently decreases IKZF1, c-MYC, and BCL-6 protein expression and increases p53 level in K-RASG12A MM.1S cells^[1]. TL4-12 dose-dependently increases Annexin-V positive cell from 6% (dimethyl sulfoxide) to 13% (1 μM) and 22% (3 μM), respectively^[1]. TL4-12 induces apoptosis and cell-cycle arrest in the G0/G1 phase in MM.1S, RPMI-8226, RPMI-8226 cells^[1]. MCE has not independently confirmed the accuracy of these methods. They are for reference only.

REFERENCES

Caution: Product has not been fully validated for medical applications. For research use only.

Tel: 609-228-6898

Fax: 609-228-5909

E-mail: tech@MedChemExpress.com

Address: 1 Deer Park Dr, Suite Q, Monmouth Junction, NJ 08852, USA