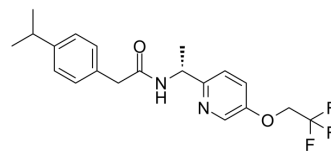


Suvecaltamide

Cat. No.:	HY-101096		
CAS No.:	953778-58-0		
Molecular Formula:	C ₂₀ H ₂₃ F ₃ N ₂ O ₂		
Molecular Weight:	380.4		
Target:	Calcium Channel		
Pathway:	Membrane Transporter/Ion Channel; Neuronal Signaling		
Storage:	Powder	-20°C	3 years
		4°C	2 years
	In solvent	-80°C	2 years
		-20°C	1 year



SOLVENT & SOLUBILITY

In Vitro	DMSO : 100 mg/mL (262.88 mM; Need ultrasonic)				
		Solvent Concentration	Mass 1 mg	5 mg	10 mg
	Preparing Stock Solutions	1 mM	2.6288 mL	13.1441 mL	26.2881 mL
		5 mM	0.5258 mL	2.6288 mL	5.2576 mL
10 mM		0.2629 mL	1.3144 mL	2.6288 mL	
Please refer to the solubility information to select the appropriate solvent.					
In Vivo	1. Add each solvent one by one: 10% DMSO >> 40% PEG300 >> 5% Tween-80 >> 45% saline Solubility: ≥ 2.5 mg/mL (6.57 mM); Clear solution 2. Add each solvent one by one: 10% DMSO >> 90% corn oil Solubility: ≥ 2.5 mg/mL (6.57 mM); Clear solution				

BIOLOGICAL ACTIVITY

Description	Suvecaltamide (MK-8998; compound 33) is a potent and selective inhibitor of the T-type calcium channel.
IC₅₀ & Target	T-type calcium channel ^[1] .

REFERENCES

[1]. Reger TS, et al. Pyridyl amides as potent inhibitors of T-type calcium channels. Bioorg Med Chem Lett. 2011 Mar 15;21(6):1692-6.

Caution: Product has not been fully validated for medical applications. For research use only.

Tel: 609-228-6898

Fax: 609-228-5909

E-mail: tech@MedChemExpress.com

Address: 1 Deer Park Dr, Suite Q, Monmouth Junction, NJ 08852, USA