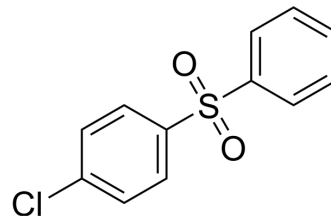


Sulphenone

Cat. No.:	HY-121688
CAS No.:	80-00-2
Molecular Formula:	C ₁₂ H ₉ ClO ₂ S
Molecular Weight:	252.72
Target:	Parasite
Pathway:	Anti-infection
Storage:	Please store the product under the recommended conditions in the Certificate of Analysis.



BIOLOGICAL ACTIVITY

Description

Sulphenone is a chemical that can be used for the control of mite^[1].

REFERENCES

[1]. Moore III S, Schwardt H H. The control of external parasites of chickens in New York State. Poultry Science, 1954, 33(6): 1230-1237.

Caution: Product has not been fully validated for medical applications. For research use only.

Tel: 609-228-6898

Fax: 609-228-5909

E-mail: tech@MedChemExpress.com

Address: 1 Deer Park Dr, Suite Q, Monmouth Junction, NJ 08852, USA