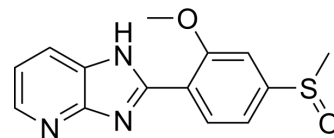


Sulmazole

Cat. No.:	HY-116675
CAS No.:	73384-60-8
Molecular Formula:	C ₁₄ H ₁₃ N ₃ O ₂ S
Molecular Weight:	287.34
Target:	Adenosine Receptor
Pathway:	GPCR/G Protein
Storage:	Please store the product under the recommended conditions in the Certificate of Analysis.



BIOLOGICAL ACTIVITY

Description	Sulmazole is a cardiotoxic agent. Sulmazole has competitive inhibitory for A1 adenosine receptor. Sulmazole can improve cardiac index and reduce pulmonary capillary wedge pressure ^[1] .
In Vitro	<p>Sulmazole has competitive inhibitory for A1 adenosine receptors^[1].</p> <p>Sulmazole attenuates the capacity of GTP to inhibit adenylate cyclase activity and covalent modification of Gi by pertussis toxin treatment abolishes the capacity of sulmazole to mediate stimulation^[1].</p> <p>Sulmazole has stimulatory effect on adenylate cyclase activity in pertussis toxin-treated membranes^[1].</p> <p>Sulmazole mediates increases in cAMP accumulation by mechanisms other than phosphodiesterase inhibition, including A1 adenosine receptor antagonism and inhibition of Gi function^[1].</p> <p>MCE has not independently confirmed the accuracy of these methods. They are for reference only.</p>

REFERENCES

[1]. W J Parsons, et al. The new cardiotoxic agent sulmazole is an A1 adenosine receptor antagonist and functionally blocks the inhibitory regulator, Gi. Mol Pharmacol. 1988 Apr;33(4):441-8.

Caution: Product has not been fully validated for medical applications. For research use only.

Tel: 609-228-6898

Fax: 609-228-5909

E-mail: tech@MedChemExpress.com

Address: 1 Deer Park Dr, Suite Q, Monmouth Junction, NJ 08852, USA