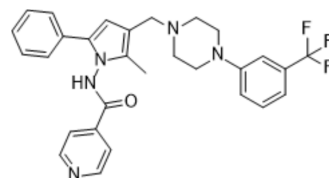


Sudoterb

Cat. No.:	HY-14990
CAS No.:	676266-31-2
Molecular Formula:	C ₂₉ H ₂₈ F ₃ N ₅ O
Molecular Weight:	519.56
Target:	Bacterial
Pathway:	Anti-infection
Storage:	Please store the product under the recommended conditions in the Certificate of Analysis.



BIOLOGICAL ACTIVITY

Description	Sudoterb (LL 3858) is an orally active anti-Tuberculosis agent ^[1] .
In Vivo	Sudoterb (12.5 mg/kg and 25 mg/kg, p.o., 4 and 8 weeks) is effective against M.tuberculosis in mice ^[2] . Sudoterb (p.o., mice) shows a LD ₅₀ of 700 mg/kg ^[2] . MCE has not independently confirmed the accuracy of these methods. They are for reference only.

REFERENCES

[1]. Maha A. Elhakeem, et al. Synthesis and anti-mycobacterial evaluation of some new isonicotinylhydrazide analogues. Bulletin of Faculty of Pharmacy, Cairo University. 2015, 53 (1), 45-52

[2]. Protopopova M, et al. In search of new cures for tuberculosis. Med Chem. 2007 May;3(3):301-16.

Caution: Product has not been fully validated for medical applications. For research use only.

Tel: 609-228-6898

Fax: 609-228-5909

E-mail: tech@MedChemExpress.com

Address: 1 Deer Park Dr, Suite Q, Monmouth Junction, NJ 08852, USA