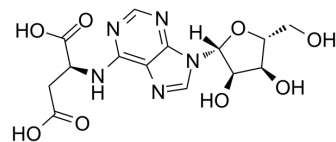


Succinyladenosine

Cat. No.:	HY-113284		
CAS No.:	4542-23-8		
Molecular Formula:	C ₁₄ H ₁₇ N ₅ O ₈		
Molecular Weight:	383.31		
Target:	Endogenous Metabolite		
Pathway:	Metabolic Enzyme/Protease		
Storage:	Powder	-20°C	3 years
	In solvent	-80°C	6 months
		-20°C	1 month



SOLVENT & SOLUBILITY

In Vitro

DMSO : ≥ 250 mg/mL (652.21 mM)
 * "≥" means soluble, but saturation unknown.

Preparing Stock Solutions	Solvent		Mass		
	Concentration		1 mg	5 mg	10 mg
	1 mM		2.6089 mL	13.0443 mL	26.0885 mL
	5 mM		0.5218 mL	2.6089 mL	5.2177 mL
	10 mM		0.2609 mL	1.3044 mL	2.6089 mL

Please refer to the solubility information to select the appropriate solvent.

BIOLOGICAL ACTIVITY

Description	Succinyladenosine, the metabolic product of dephosphorylation of intracellular adenylosuccinic acid (S-AMP) by cytosolic 5-nucleotidase, is a biochemical marker of adenylosuccinase (ASL) deficiency ^[1] .
IC ₅₀ & Target	Human Endogenous Metabolite
In Vitro	The presence of high concentrations of Succinyladenosine (S-Ado) in the human cerebrospinal fluid (CSF) in the range of 100–500 μmol/L is a diagnostic marker for inherited enzyme deficiency of ASL ^[1] . MCE has not independently confirmed the accuracy of these methods. They are for reference only.

REFERENCES

[1]. J Krijt, et al. Identification and Determination of Succinyladenosine in Human Cerebrospinal Fluid . J Chromatogr B Biomed Sci Appl. 1999 Apr 16;726(1-2):53-8.

Caution: Product has not been fully validated for medical applications. For research use only.

Tel: 609-228-6898

Fax: 609-228-5909

E-mail: tech@MedChemExpress.com

Address: 1 Deer Park Dr, Suite Q, Monmouth Junction, NJ 08852, USA