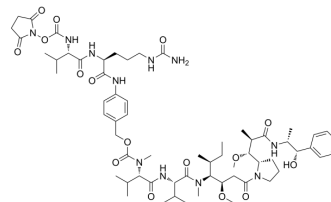


SuO-Val-Cit-PAB-MMAE

Cat. No.:	HY-100566
Molecular Formula:	C ₆₃ H ₉₇ N ₁₁ O ₁₆
Molecular Weight:	1264.51
Target:	Drug-Linker Conjugates for ADC
Pathway:	Antibody-drug Conjugate/ADC Related
Storage:	-80°C, stored under nitrogen

* The compound is unstable in solutions, freshly prepared is recommended.



SOLVENT & SOLUBILITY

In Vitro

DMSO : 10 mg/mL (7.91 mM; ultrasonic and warming and heat to 60°C)

Preparing Stock Solutions	Solvent Concentration	Mass		
		1 mg	5 mg	10 mg
	1 mM	0.7908 mL	3.9541 mL	7.9082 mL
	5 mM	0.1582 mL	0.7908 mL	1.5816 mL
	10 mM	---	---	---

Please refer to the solubility information to select the appropriate solvent.

BIOLOGICAL ACTIVITY

Description

SuO-Val-Cit-PAB-MMAE is a agent-linker conjugate for ADC by using the anti-mitotic agent, monomethyl auristatin E (MMAE, a tubulin inhibitor), linked via the peptide SuO-Val-Cit-PAB^[1].

IC₅₀ & Target

Auristatin

In Vitro

ADCs are comprised of an antibody to which is attached an ADC cytotoxin through an ADC linker. MCE has not independently confirmed the accuracy of these methods. They are for reference only.

REFERENCES

[1]. Kamath AV, et al. Preclinical Pharmacokinetic Considerations for the Development of Antibody Drug Conjugates. Pharm Res. 2015 Nov;32(11):3470-9.

Caution: Product has not been fully validated for medical applications. For research use only.

Tel: 609-228-6898

Fax: 609-228-5909

E-mail: tech@MedChemExpress.com

Address: 1 Deer Park Dr, Suite Q, Monmouth Junction, NJ 08852, USA