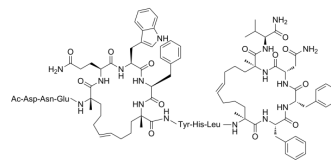


StRIP16

Cat. No.:	HY-136197
CAS No.:	2761279-63-2
Molecular Formula:	C ₁₁₆ H ₁₅₄ N ₂₄ O ₂₆
Molecular Weight:	2300.65
Target:	Ras
Pathway:	GPCR/G Protein
Storage:	Please store the product under the recommended conditions in the Certificate of Analysis.



BIOLOGICAL ACTIVITY

Description	StRIP16, bioavailable StRIP3 analogue, is a double-stapled peptide which can bind to Rab8a GTPase, with a K _d of 12.7 μM ^[1] .
IC₅₀ & Target	Kd: 12.7 μM (Rab8a GTPase) ^[1]
In Vitro	StRIP16 shows selectivity for Rab8 over other Rab-GTPases and does not engage H-Ras or N-Ras (rel. K _d =~10, ~25, ~35, 1.0, ~10, >100, >50, and >100 for Rab1b, Rab5a, Rab6a, Rab8a, Rab9a, Rab11a, H- and N-Ras respectively) ^[1] . MCE has not independently confirmed the accuracy of these methods. They are for reference only.

REFERENCES

[1]. Cromm PM, et, al. Protease-Resistant and Cell-Permeable Double-Stapled Peptides Targeting the Rab8a GTPase. ACS Chem Biol. 2016 Aug 19;11(8):2375-82.

Caution: Product has not been fully validated for medical applications. For research use only.

Tel: 609-228-6898

Fax: 609-228-5909

E-mail: tech@MedChemExpress.com

Address: 1 Deer Park Dr, Suite Q, Monmouth Junction, NJ 08852, USA