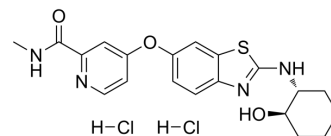


Sotuletinib dihydrochloride

Cat. No.:	HY-12768B
CAS No.:	2222138-40-9
Molecular Formula:	C ₂₀ H ₂₄ Cl ₂ N ₄ O ₃ S
Molecular Weight:	471.4
Target:	c-Fms
Pathway:	Protein Tyrosine Kinase/RTK
Storage:	Please store the product under the recommended conditions in the Certificate of Analysis.



BIOLOGICAL ACTIVITY

Description	Sotuletinib (BLZ945) dihydrochloride is an orally active and blood-brain barrier-permeable CSF1-R-specific inhibitor (IC ₅₀ =1 nM). Sotuletinib (BLZ945) dihydrochloride induces tumor cell apoptosis and effectively inhibits tumor growth in mouse models. Sotuletinib dihydrochloride can be used in cancer and amyotrophic lateral sclerosis (ALS) research ^[1] .
IC ₅₀ & Target	IC ₅₀ : CSF1-R (1 nM) ^[1] .

CUSTOMER VALIDATION

- Nat Biomed Eng. 2018 Aug;2(8):578-588.
- Blood. 2019 Nov 28;134(22):1929-1940.
- Bioact Mater. 11 March 2022.
- J Exp Med. 2023 Mar 6;220(3):e20220857.
- J Exp Med. 2020 Nov 2;217(11):e20191820.

See more customer validations on www.MedChemExpress.com

REFERENCES

- [1]. Pyonteck SM, et al. CSF-1R inhibition alters macrophage polarization and blocks glioma progression. Nat Med. 2013 Oct;19(10):1264-72.
- [2]. Pognan F, et al. Liver enzyme delayed clearance in rat treated by CSF1 receptor specific antagonist Sotuletinib. Curr Res Toxicol. 2022 Oct 29;3:100091.

Caution: Product has not been fully validated for medical applications. For research use only.

Tel: 609-228-6898

Fax: 609-228-5909

E-mail: tech@MedChemExpress.com

Address: 1 Deer Park Dr, Suite Q, Monmouth Junction, NJ 08852, USA