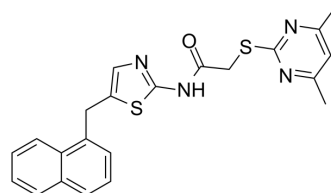


SirReal2

Cat. No.:	HY-100591		
CAS No.:	709002-46-0		
Molecular Formula:	C ₂₂ H ₂₀ N ₄ OS ₂		
Molecular Weight:	420.55		
Target:	Sirtuin		
Pathway:	Cell Cycle/DNA Damage; Epigenetics		
Storage:	Powder	-20°C	3 years
	In solvent	-80°C	6 months
		-20°C	1 month



SOLVENT & SOLUBILITY

In Vitro	DMSO : 31.25 mg/mL (74.31 mM; Need ultrasonic)				
		Solvent Concentration	Mass		
	Preparing Stock Solutions		1 mg	5 mg	10 mg
		1 mM	2.3778 mL	11.8892 mL	23.7784 mL
		5 mM	0.4756 mL	2.3778 mL	4.7557 mL
	10 mM	0.2378 mL	1.1889 mL	2.3778 mL	
Please refer to the solubility information to select the appropriate solvent.					
In Vivo	1. Add each solvent one by one: 10% DMSO >> 40% PEG300 >> 5% Tween-80 >> 45% saline Solubility: ≥ 2.08 mg/mL (4.95 mM); Clear solution				
	2. Add each solvent one by one: 10% DMSO >> 90% (20% SBE-β-CD in saline) Solubility: ≥ 2.08 mg/mL (4.95 mM); Clear solution				
	3. Add each solvent one by one: 10% DMSO >> 90% corn oil Solubility: ≥ 2.08 mg/mL (4.95 mM); Clear solution				

BIOLOGICAL ACTIVITY

Description	SirReal2 is a potent, isotype-selective Sirt2 inhibitor with an IC ₅₀ value of 140 nM and has very little effect on the activities of Sirt3-5. SirReal2 leads to tubulin hyperacetylation in HeLa cells and induces destabilization of the checkpoint protein BubR1 [1].
IC ₅₀ & Target	SIRT2 140 nM (IC ₅₀)

CUSTOMER VALIDATION

- Acta Pharm Sin B. 2019 Dec 13;8(12):1421-1428.
- Acta Pharm Sin B. 2019 Nov;9(6):1183-1192.

See more customer validations on www.MedChemExpress.com

REFERENCES

- [1]. Rumpf T, et al. Selective Sirt2 inhibition by ligand-induced rearrangement of the active site. Nat Commun. 2015 Feb 12;6:6263.
- [2]. Schiedel M, Rumpf T, Karaman B, et al. Structure-Based Development of an Affinity Probe for Sirtuin 2. Angew Chem Int Ed Engl. 2016;55(6):2252-2256.
-

Caution: Product has not been fully validated for medical applications. For research use only.

Tel: 609-228-6898

Fax: 609-228-5909

E-mail: tech@MedChemExpress.com

Address: 1 Deer Park Dr, Suite Q, Monmouth Junction, NJ 08852, USA