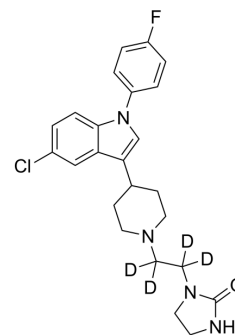


## Sertindole-d<sub>4</sub>

<b>Cat. No.:</b>	HY-14543S
<b>CAS No.:</b>	1794737-42-0
<b>Molecular Formula:</b>	C <sub>24</sub> H <sub>22</sub> D <sub>4</sub> ClFN <sub>4</sub> O
<b>Molecular Weight:</b>	444.97
<b>Target:</b>	5-HT Receptor; Dopamine Receptor; Autophagy; Adrenergic Receptor; Isotope-Labeled Compounds
<b>Pathway:</b>	GPCR/G Protein; Neuronal Signaling; Autophagy; Others
<b>Storage:</b>	4°C, sealed storage, away from moisture and light * In solvent : -80°C, 6 months; -20°C, 1 month (sealed storage, away from moisture and light)



### BIOLOGICAL ACTIVITY

<b>Description</b>	Sertindole-d <sub>4</sub> is the deuterium labeled Sertindole. Sertindole, a neuroleptic, is one of the newer antipsychotic medications available[1][2].
<b>In Vitro</b>	Stable heavy isotopes of hydrogen, carbon, and other elements have been incorporated into drug molecules, largely as tracers for quantitation during the drug development process. Deuteration has gained attention because of its potential to affect the pharmacokinetic and metabolic profiles of drugs <sup>[1]</sup> . MCE has not independently confirmed the accuracy of these methods. They are for reference only.

### REFERENCES

- [1]. Russak EM, et al. Impact of Deuterium Substitution on the Pharmacokinetics of Pharmaceuticals. *Ann Pharmacother.* 2019;53(2):211-216.
- [2]. Juruena, M.F., E.P. de Sena, and I.R. de Oliveira, Sertindole in the management of schizophrenia. *J Cent Nerv Syst Dis*, 2011. 3: p. 75-85.
- [3]. Kane, J.M. and C.A. Tamminga, Sertindole (Serdolect): preclinical and clinical findings of a new atypical antipsychotic. *Expert Opin Investig Drugs*, 1997. 6(11): p. 1729-41.
- [4]. Murdoch, D. and G.M. Keating, Sertindole : a review of its use in schizophrenia. *CNS Drugs*, 2006. 20(3): p. 233-55.

**Caution: Product has not been fully validated for medical applications. For research use only.**

Tel: 609-228-6898

Fax: 609-228-5909

E-mail: tech@MedChemExpress.com

Address: 1 Deer Park Dr, Suite Q, Monmouth Junction, NJ 08852, USA