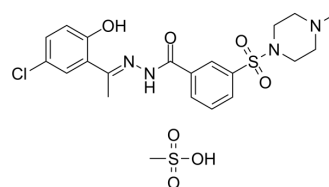


## Seclidemstat mesylate

<b>Cat. No.:</b>	HY-103713A
<b>CAS No.:</b>	2044953-70-8
<b>Molecular Formula:</b>	C <sub>21</sub> H <sub>27</sub> ClN <sub>4</sub> O <sub>7</sub> S <sub>2</sub>
<b>Molecular Weight:</b>	547.04
<b>Target:</b>	Histone Demethylase
<b>Pathway:</b>	Epigenetics
<b>Storage:</b>	4°C, sealed storage, away from moisture and light * In solvent : -80°C, 6 months; -20°C, 1 month (sealed storage, away from moisture and light)



### SOLVENT & SOLUBILITY

#### In Vitro

DMSO : 53.33 mg/mL (97.49 mM; Need ultrasonic)  
H<sub>2</sub>O : < 0.1 mg/mL (ultrasonic;warming;heat to 60°C) (insoluble)

Solvent	Mass	Concentration		
		1 mg	5 mg	10 mg
Preparing Stock Solutions	1 mM	1.8280 mL	9.1401 mL	18.2802 mL
	5 mM	0.3656 mL	1.8280 mL	3.6560 mL
	10 mM	0.1828 mL	0.9140 mL	1.8280 mL

Please refer to the solubility information to select the appropriate solvent.

### BIOLOGICAL ACTIVITY

#### Description

Seclidemstat (SP-2577) mesylate is a potent noncompetitive and reversible KDM1A (LSD1) inhibitor (K<sub>i</sub>=31 nM, IC<sub>50</sub>=13 nM). Seclidemstat mesylate promotes antitumor immunity in switch/sucrose nonfermentable (SWI/SNF) complex mutated ovarian cancer, as well as inhibit virus production, viral DNA replication, and late gene expression. Seclidemstat mesylate can be used for the research of Ewing Sarcoma<sup>[1][2]</sup>.

#### IC<sub>50</sub> & Target

Ki: 31 nM (LSD1)<sup>[1]</sup>  
IC<sub>50</sub>: 13 nM (LSD1)<sup>[1]</sup>

#### In Vitro

Seclidemstat (72 hours) mesylate inhibits SWI/SNF-mutation-dependent tumor cell proliferation with IC<sub>50</sub> ranging from 0.013 to 2.819 μM (COV434, BIN67, SCCOHT-1, TOV21G, SKOV3, A427, H522, A549, H1299, G401, G402, HCC15 cells)<sup>[2]</sup>. Seclidemstat (72 hours) mesylate promotes endogenous retroviruses (ERVs) expression and activation of IFNβ pathway in SCCOHT cell lines (SCCOHT-1, BIN67, and COV434 cells)<sup>[2]</sup>. Seclidemstat (3 μM) mesylate promotes PD-L1 expression in SCCOHT COV 434 pIND 20 BRG1-2.7 cell line<sup>[2]</sup>. MCE has not independently confirmed the accuracy of these methods. They are for reference only.

---

## CUSTOMER VALIDATION

- Nat Cell Biol. 2022 Feb 17.
- ACS Pharmacol Transl Sci. November 12, 2021.
- bioRxiv. 2020 May.

See more customer validations on [www.MedChemExpress.com](http://www.MedChemExpress.com)

## REFERENCES

[1]. Dai XJ, et al. Reversible Lysine Specific Demethylase 1 (LSD1) Inhibitors: A Promising Wrench to Impair LSD1 [published correction appears in J Med Chem. 2021 May 13;64(9):6410-6411]. J Med Chem. 2021;64(5):2466-2488.

[2]. Soldi R, et al. The novel reversible LSD1 inhibitor SP-2577 promotes anti-tumor immunity in SWItch/Sucrose-NonFermentable (SWI/SNF) complex mutated ovarian cancer. PLoS One. 2020;15(7):e0235705. Published 2020 Jul 10.

---

**Caution: Product has not been fully validated for medical applications. For research use only.**

Tel: 609-228-6898

Fax: 609-228-5909

E-mail: [tech@MedChemExpress.com](mailto:tech@MedChemExpress.com)

Address: 1 Deer Park Dr, Suite Q, Monmouth Junction, NJ 08852, USA