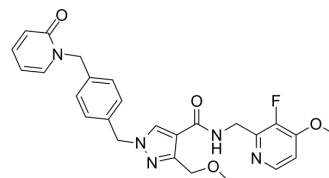


## Sebetralstat

Cat. No.:	HY-132830		
CAS No.:	1933514-13-6		
Molecular Formula:	C <sub>26</sub> H <sub>26</sub> FN <sub>5</sub> O <sub>4</sub>		
Molecular Weight:	491.51		
Target:	Ser/Thr Protease		
Pathway:	Metabolic Enzyme/Protease		
Storage:	Powder	-20°C	3 years
		4°C	2 years
	In solvent	-80°C	6 months
		-20°C	1 month



### SOLVENT & SOLUBILITY

#### In Vitro

DMSO : ≥ 125 mg/mL (254.32 mM)  
 \* "≥" means soluble, but saturation unknown.

Concentration	Solvent	Mass		
		1 mg	5 mg	10 mg
Preparing Stock Solutions	1 mM	2.0345 mL	10.1727 mL	20.3455 mL
	5 mM	0.4069 mL	2.0345 mL	4.0691 mL
	10 mM	0.2035 mL	1.0173 mL	2.0345 mL

Please refer to the solubility information to select the appropriate solvent.

### BIOLOGICAL ACTIVITY

Description	Sebetralstat (KVD900) is a plasma kallikrein inhibitor (WO2016083820). Sebetralstat can be used for the research of metabolic diseases <sup>[1]</sup> .
IC <sub>50</sub> & Target	Plasma Kallikrein <sup>[1]</sup>
In Vitro	Sebetralstat is a plasma kallikrein inhibitor <sup>[1]</sup> . MCE has not independently confirmed the accuracy of these methods. They are for reference only.

### REFERENCES

[1]. WO2016083820

---

**Caution: Product has not been fully validated for medical applications. For research use only.**

Tel: 609-228-6898

Fax: 609-228-5909

E-mail: [tech@MedChemExpress.com](mailto:tech@MedChemExpress.com)

Address: 1 Deer Park Dr, Suite Q, Monmouth Junction, NJ 08852, USA