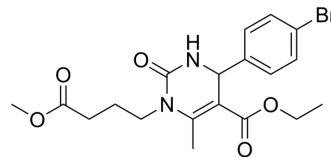


SW02

Cat. No.:	HY-138820
CAS No.:	1010820-68-4
Molecular Formula:	C ₁₉ H ₂₃ BrN ₂ O ₅
Molecular Weight:	439.3
Target:	HSP
Pathway:	Cell Cycle/DNA Damage; Metabolic Enzyme/Protease
Storage:	Please store the product under the recommended conditions in the Certificate of Analysis.



BIOLOGICAL ACTIVITY

Description	SW02 is a potent activator of ATPase activity of Hsp70, with an EC ₅₀ of 150 μM. SW02 leads to accumulation of both total tau and phosphorylated tau (pTau) ^[1] .
IC ₅₀ & Target	TRAP1 ATPase 150 ± 21 μM (EC ₅₀)

REFERENCES

[1]. Jinwal UK, et al. Chemical manipulation of hsp70 ATPase activity regulates tau stability. J Neurosci. 2009 Sep 30;29(39):12079-88.

Caution: Product has not been fully validated for medical applications. For research use only.

Tel: 609-228-6898

Fax: 609-228-5909

E-mail: tech@MedChemExpress.com

Address: 1 Deer Park Dr, Suite Q, Monmouth Junction, NJ 08852, USA