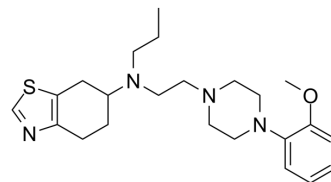


ST-836

Cat. No.:	HY-15238
CAS No.:	1148156-63-1
Molecular Formula:	C ₂₃ H ₃₄ N ₄ OS
Molecular Weight:	414.61
Target:	Dopamine Receptor
Pathway:	GPCR/G Protein; Neuronal Signaling
Storage:	Please store the product under the recommended conditions in the Certificate of Analysis.



BIOLOGICAL ACTIVITY

Description	ST-836 is a dopamine receptor ligand; Antiparkinsonian agent.
-------------	---

Caution: Product has not been fully validated for medical applications. For research use only.

Tel: 609-228-6898

Fax: 609-228-5909

E-mail: tech@MedChemExpress.com

Address: 1 Deer Park Dr, Suite Q, Monmouth Junction, NJ 08852, USA