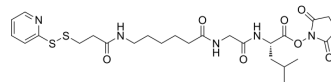


SPDP-C6-Gly-Leu-NHS ester

Cat. No.:	HY-141123
Molecular Formula:	C ₂₆ H ₃₇ N ₅ O ₇ S ₂
Molecular Weight:	595.73
Target:	ADC Linker
Pathway:	Antibody-drug Conjugate/ADC Related
Storage:	Please store the product under the recommended conditions in the Certificate of Analysis.



BIOLOGICAL ACTIVITY

Description	SPDP-C6-Gly-Leu-NHS ester is a cleavable ADC linker used in the synthesis of antibody-drug conjugates (ADCs) ^[1] .	
IC ₅₀ & Target	Disulfide Cleavable	Cleavable
In Vitro	ADCs are comprised of an antibody to which is attached an ADC cytotoxin through an ADC linker ^[1] . MCE has not independently confirmed the accuracy of these methods. They are for reference only.	

REFERENCES

[1]. Beck A, et al. Strategies and challenges for the next generation of antibody-drug conjugates. Nat Rev Drug Discov. 2017 May;16(5):315-337.

Caution: Product has not been fully validated for medical applications. For research use only.

Tel: 609-228-6898

Fax: 609-228-5909

E-mail: tech@MedChemExpress.com

Address: 1 Deer Park Dr, Suite Q, Monmouth Junction, NJ 08852, USA