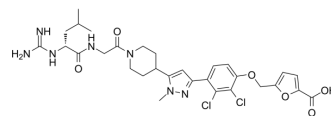


## SP4206

<b>Cat. No.:</b>	HY-119424		
<b>CAS No.:</b>	515846-21-6		
<b>Molecular Formula:</b>	C <sub>30</sub> H <sub>37</sub> Cl <sub>2</sub> N <sub>7</sub> O <sub>6</sub>		
<b>Molecular Weight:</b>	662.56		
<b>Target:</b>	Interleukin Related		
<b>Pathway:</b>	Immunology/Inflammation		
<b>Storage:</b>	Powder	-20°C	3 years
		4°C	2 years
	In solvent	-80°C	6 months
		-20°C	1 month



### SOLVENT & SOLUBILITY

#### In Vitro

DMSO : 100 mg/mL (150.93 mM; Need ultrasonic)

Concentration	Solvent	Mass	Preparing Stock Solutions		
			1 mg	5 mg	10 mg
1 mM			1.5093 mL	7.5465 mL	15.0930 mL
5 mM			0.3019 mL	1.5093 mL	3.0186 mL
10 mM			0.1509 mL	0.7546 mL	1.5093 mL

Please refer to the solubility information to select the appropriate solvent.

#### In Vivo

- Add each solvent one by one: 10% DMSO >> 40% PEG300 >> 5% Tween-80 >> 45% saline  
Solubility: ≥ 2.08 mg/mL (3.14 mM); Clear solution
- Add each solvent one by one: 10% DMSO >> 90% (20% SBE-β-CD in saline)  
Solubility: ≥ 2.08 mg/mL (3.14 mM); Clear solution
- Add each solvent one by one: 10% DMSO >> 90% corn oil  
Solubility: ≥ 2.08 mg/mL (3.14 mM); Clear solution

### BIOLOGICAL ACTIVITY

#### Description

SP4206 is an IL-2/IL-2Rα interaction inhibitor. SP4206 binds with high affinity ( $K_d=70$  nM) to IL-2 and blocks binding to its natural receptor IL-2Rα ( $K_d=10$  nM)<sup>[1]</sup>.

#### IC<sub>50</sub> & Target

IL-2  
70 nM (Kd)

#### In Vitro

SP4206 binds the WT IL-2, IL-2 variant K35L/M39V, IL-2 variant P65A, and IL-2 variant V69A with EC<sub>50</sub>s of 68.8, 80.1, 117.0, and

---

10.4 nM, respectively<sup>[1]</sup>.

MCE has not independently confirmed the accuracy of these methods. They are for reference only.

---

## REFERENCES

---

[1]. Thanos CD, et al. Hot-spot mimicry of a cytokine receptor by a small molecule. Proc Natl Acad Sci U S A. 2006 Oct 17;103(42):15422-7.

---

**Caution: Product has not been fully validated for medical applications. For research use only.**

Tel: 609-228-6898

Fax: 609-228-5909

E-mail: [tech@MedChemExpress.com](mailto:tech@MedChemExpress.com)

Address: 1 Deer Park Dr, Suite Q, Monmouth Junction, NJ 08852, USA