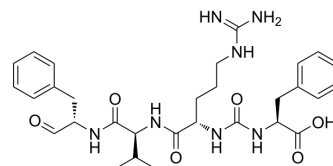


SP-Chymostatin B

Cat. No.:	HY-126988
CAS No.:	70857-49-7
Molecular Formula:	C ₃₀ H ₄₁ N ₇ O ₆
Molecular Weight:	595.69
Target:	Elastase
Pathway:	Metabolic Enzyme/Protease
Storage:	Please store the product under the recommended conditions in the Certificate of Analysis.



BIOLOGICAL ACTIVITY

Description	SP-Chymostatin B (α -MAPI) is a strong inhibitor of many proteases, including chymotrypsin, papain, chymotrypsin-like serine proteinases, chymases, and lysosomal cysteine proteinases such as cathepsins A,B,C, H, and L. SP-Chymostatin B weakly inhibits human leucocyte elastase ^[1] .
IC ₅₀ & Target	proteases ^[1]

REFERENCES

[1]. Syuichi Oka, et al. Protease Inhibitors Produced by Streptomyces libani. Agricultural and Biological Chemistry, Volume 43, Issue 4, 1 April 1979, Pages 691–696

Caution: Product has not been fully validated for medical applications. For research use only.

Tel: 609-228-6898

Fax: 609-228-5909

E-mail: tech@MedChemExpress.com

Address: 1 Deer Park Dr, Suite Q, Monmouth Junction, NJ 08852, USA