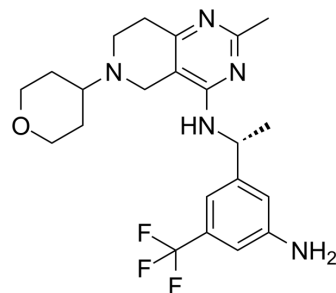


## SOS1-IN-9

|                    |   |
|--------------------|---|
| Cat. No.:          | HY-144207   |
| CAS No.:           | 2758900-76-2  |
| Molecular Formula: | C <sub>22</sub> H <sub>28</sub> F <sub>3</sub> N <sub>5</sub> O                           |
| Molecular Weight:  | 435.49  |
| Target:            | Ras   |
| Pathway:           | GPCR/G Protein  |
| Storage:           | Please store the product under the recommended conditions in the Certificate of Analysis. |



### BIOLOGICAL ACTIVITY

|                           |  |
|---------------------------|--|
| Description               | SOS1-IN-9 is a potent SOS1 inhibitor with an IC <sub>50</sub> of 116.5 nM for SOS1-KRAS G12C (WO2022028506A1, compound 302) <sup>[1]</sup> . |
| IC <sub>50</sub> & Target | KRAS G12C-SOS1<br>116.5 nM (IC <sub>50</sub> )   |

### REFERENCES

[1]. Sos1 inhibitor, pharmaceutical composition containing same, and use therefor. WO2022028506A1.

**Caution: Product has not been fully validated for medical applications. For research use only.**

Tel: 609-228-6898

Fax: 609-228-5909

E-mail: tech@MedChemExpress.com

Address: 1 Deer Park Dr, Suite Q, Monmouth Junction, NJ 08852, USA