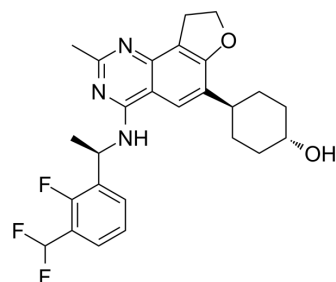


SOS1-IN-6

Cat. No.:	HY-144210
CAS No.:	2751718-88-2
Molecular Formula:	C ₂₆ H ₂₈ F ₃ N ₃ O ₂
Molecular Weight:	471.51
Target:	Ras
Pathway:	GPCR/G Protein
Storage:	Please store the product under the recommended conditions in the Certificate of Analysis.



BIOLOGICAL ACTIVITY

Description	SOS1-IN-6 (compound 33-P1) is a potent SOS1 inhibitor with IC ₅₀ s of 14.9 and 73.3 nM for SOS1-G12D and SOS1-G12V, respectively ^[1] .	
IC₅₀ & Target	SOS1-G12D 14.9 nM (IC ₅₀)	SOS1-G12V 73.3 nM (IC ₅₀)

REFERENCES

[1]. Fused quinazoline derivative, preparation method therefor and application thereof in medicine. WO2021249475A1.

Caution: Product has not been fully validated for medical applications. For research use only.

Tel: 609-228-6898

Fax: 609-228-5909

E-mail: tech@MedChemExpress.com

Address: 1 Deer Park Dr, Suite Q, Monmouth Junction, NJ 08852, USA