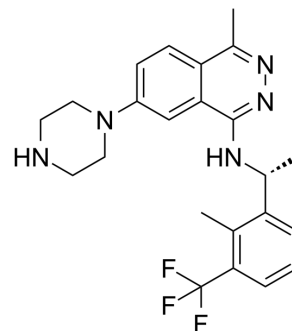


SOS1-IN-12

Cat. No.:	HY-144965
CAS No.:	2654741-56-5
Molecular Formula:	C ₂₃ H ₂₆ F ₃ N ₅
Molecular Weight:	429.48
Target:	Ras
Pathway:	GPCR/G Protein
Storage:	Please store the product under the recommended conditions in the Certificate of Analysis.



BIOLOGICAL ACTIVITY

Description	SOS1-IN-12 is a potent inhibitor of sevenless homolog 1 (SOS1) with a K _i of 0.11 nM for SOS1 and an IC ₅₀ of 47 nM for pERK. SOS1-IN-13 can be used for researching anticancer ^[1] .
IC ₅₀ & Target	K _i : 0.11 nM (SOS1) ^[1] IC ₅₀ : 47 nM (pERK) ^[1]

REFERENCES

[1]. Matthew Arnold Marx, et al. Sos1 inhibitors. WO2021127429A1 (compound 6-4)

Caution: Product has not been fully validated for medical applications. For research use only.

Tel: 609-228-6898

Fax: 609-228-5909

E-mail: tech@MedChemExpress.com

Address: 1 Deer Park Dr, Suite Q, Monmouth Junction, NJ 08852, USA