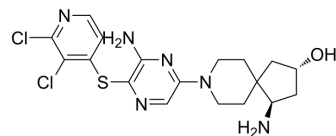


SHP2-IN-1

| | | | |
|--------------------|---|-------|----------|
| Cat. No.: | HY-114460 | | |
| CAS No.: | 1801764-90-8 | | |
| Molecular Formula: | C ₁₈ H ₂₂ Cl ₂ N ₆ OS | | |
| Molecular Weight: | 441.38 | | |
| Target: | Phosphatase; SHP2 | | |
| Pathway: | Metabolic Enzyme/Protease; Protein Tyrosine Kinase/RTK | | |
| Storage: | Powder | -20°C | 3 years |
| | | 4°C | 2 years |
| | In solvent | -80°C | 6 months |
| | | -20°C | 1 month |



BIOLOGICAL ACTIVITY

| | |
|---------------------------|--|
| Description | SHP2-IN-1 (compound 13) is an allergic inhibitor of SHP2 (PTPN11), with an IC ₅₀ of 3 nM. |
| IC ₅₀ & Target | IC ₅₀ : 3 nM (SHP2) ^[1] . |

REFERENCES

[1]. WO2018130928A1.

Caution: Product has not been fully validated for medical applications. For research use only.

Tel: 609-228-6898

Fax: 609-228-5909

E-mail: tech@MedChemExpress.com

Address: 1 Deer Park Dr, Suite Q, Monmouth Junction, NJ 08852, USA