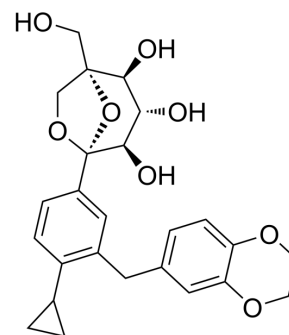


SGLT1/2-IN-1

Cat. No.:	HY-138944
CAS No.:	1673514-65-2
Molecular Formula:	C ₂₅ H ₂₈ O ₈
Molecular Weight:	456.49
Target:	SGLT
Pathway:	Membrane Transporter/Ion Channel
Storage:	Please store the product under the recommended conditions in the Certificate of Analysis.



BIOLOGICAL ACTIVITY

Description	SGLT1/2-IN-1 is a dual SGLT1/SGLT2 inhibitor extract from WO2015032272A1, compound 2 ^[1] .	
IC ₅₀ & Target	SGLT1 15.72 mM (IC ₅₀)	SGLT2 3.67 mM (IC ₅₀)

REFERENCES

[1]. WO2015032272A1. C-aryl glucoside derivative, preparation method for same, and medical applications thereof.

Caution: Product has not been fully validated for medical applications. For research use only.

Tel: 609-228-6898

Fax: 609-228-5909

E-mail: tech@MedChemExpress.com

Address: 1 Deer Park Dr, Suite Q, Monmouth Junction, NJ 08852, USA