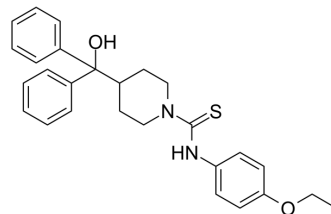


## SF 11

<b>Cat. No.:</b>	HY-107731
<b>CAS No.:</b>	443292-81-7
<b>Molecular Formula:</b>	C <sub>27</sub> H <sub>30</sub> N <sub>2</sub> O <sub>2</sub> S
<b>Molecular Weight:</b>	446.6
<b>Target:</b>	Neuropeptide Y Receptor
<b>Pathway:</b>	GPCR/G Protein; Neuronal Signaling
<b>Storage:</b>	4°C, protect from light * In solvent : -80°C, 6 months; -20°C, 1 month (protect from light)



### SOLVENT & SOLUBILITY

#### In Vitro

DMSO : 250 mg/mL (559.79 mM; Need ultrasonic)

Concentration	Solvent	Mass		
		1 mg	5 mg	10 mg
Preparing Stock Solutions	1 mM	2.2391 mL	11.1957 mL	22.3914 mL
	5 mM	0.4478 mL	2.2391 mL	4.4783 mL
	10 mM	0.2239 mL	1.1196 mL	2.2391 mL

Please refer to the solubility information to select the appropriate solvent.

### BIOLOGICAL ACTIVITY

#### Description

SF 11 is a potent and brain penetrant neuropeptide Y<sub>2</sub> receptor antagonist (IC<sub>50</sub>=199 nM). Antidepressant-like activity<sup>[1][2]</sup>.

#### IC<sub>50</sub> & Target

NPY<sub>2</sub> receptor  
199 nM (IC<sub>50</sub>)

### REFERENCES

[1]. Domin H, et al. Characterization of the Brain Penetrant Neuropeptide Y<sub>2</sub> Receptor Antagonist SF-11. ACS Chem Neurosci. 2019;10(8):3454-3463.

[2]. Brothers SP, et al. Selective and brain penetrant neuropeptide y<sub>2</sub> receptor antagonists discovered by whole-cell high-throughput screening. Mol Pharmacol. 2010;77(1):46-57.

---

**Caution: Product has not been fully validated for medical applications. For research use only.**

Tel: 609-228-6898

Fax: 609-228-5909

E-mail: [tech@MedChemExpress.com](mailto:tech@MedChemExpress.com)

Address: 1 Deer Park Dr, Suite Q, Monmouth Junction, NJ 08852, USA