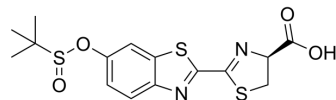


SEluc-2

Cat. No.:	HY-138760
CAS No.:	2421112-19-6
Molecular Formula:	C ₁₅ H ₁₆ N ₂ O ₄ S ₃
Molecular Weight:	384.49
Target:	Fluorescent Dye
Pathway:	Others
Storage:	4°C, protect from light * In solvent : -80°C, 6 months; -20°C, 1 month (protect from light)



BIOLOGICAL ACTIVITY

Description	SEluc-2 is a small-molecule probe based on the firefly luciferin. SEluc-2, a bioluminescent probe for the sensitive and selective detection of thiols in living cells ^[1] .
In Vitro	SEluc-2 exhibits larger enhancement in fluorescence intensity at 533 nm when incubated with cysteine compared with SEluc-1, and the fluorescence intensity saturated after 25 min ^[1] . MCE has not independently confirmed the accuracy of these methods. They are for reference only.

REFERENCES

[1]. Mayu Hemmi, et al. Highly Sensitive Bioluminescent Probe for Thiol Detection in Living Cells. Chem Asian J. 2018 Mar 16;13(6):648-655.

Caution: Product has not been fully validated for medical applications. For research use only.

Tel: 609-228-6898

Fax: 609-228-5909

E-mail: tech@MedChemExpress.com

Address: 1 Deer Park Dr, Suite Q, Monmouth Junction, NJ 08852, USA