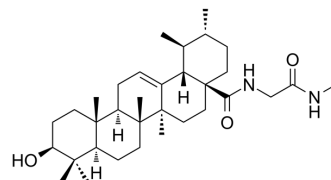


## SEN1-IN-4

Cat. No.:	HY-134597
CAS No.:	2416910-64-8
Molecular Formula:	C <sub>33</sub> H <sub>54</sub> N <sub>2</sub> O <sub>3</sub>
Molecular Weight:	526.79
Target:	E1/E2/E3 Enzyme
Pathway:	Metabolic Enzyme/Protease
Storage:	Please store the product under the recommended conditions in the Certificate of Analysis.



### BIOLOGICAL ACTIVITY

<b>Description</b>	SEN1-IN-4 is a specific deSUMOylation protease 1 (SEN1) inhibitor extracted from patent CN110627860, Compound 21. SEN1-IN-4 is developed for tumor radiosensitivity enhancement <sup>[1]</sup> .									
<b>In Vitro</b>	<p>SEN1-IN-4 improves the sensitivity of tumor cells to irradiation<sup>[1]</sup>.            SEN1-IN-4 (0.7-20 μM; 72 hours) has cytotoxic for Hella cells with an IC<sub>50</sub> of &gt;20 μM<sup>[1]</sup>.            MCE has not independently confirmed the accuracy of these methods. They are for reference only.            Cell Cytotoxicity Assay<sup>[1]</sup></p> <table border="1"> <tr> <td>Cell Line:</td> <td>Hela cells</td> </tr> <tr> <td>Concentration:</td> <td>0.7 μ M, 2.2 μM, 6.6 μM, 20 μM</td> </tr> <tr> <td>Incubation Time:</td> <td>72 hours</td> </tr> <tr> <td>Result:</td> <td>IC<sub>50</sub>&gt;20 μM</td> </tr> </table>		Cell Line:	Hela cells	Concentration:	0.7 μ M, 2.2 μM, 6.6 μM, 20 μM	Incubation Time:	72 hours	Result:	IC <sub>50</sub> >20 μM
Cell Line:	Hela cells									
Concentration:	0.7 μ M, 2.2 μM, 6.6 μM, 20 μM									
Incubation Time:	72 hours									
Result:	IC <sub>50</sub> >20 μM									

### REFERENCES

[1]. Li, Yiliang, et al. Preparation of ursolic acid derivatives useful as SEN1 inhibitors and tumor radiosensitizer. CN110627860A.

**Caution: Product has not been fully validated for medical applications. For research use only.**

Tel: 609-228-6898

Fax: 609-228-5909

E-mail: tech@MedChemExpress.com

Address: 1 Deer Park Dr, Suite Q, Monmouth Junction, NJ 08852, USA