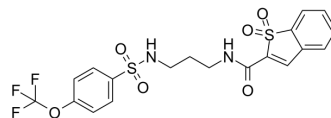


## SCP1-IN-2

Cat. No.:	HY-142683
CAS No.:	2764615-56-5
Molecular Formula:	C <sub>19</sub> H <sub>17</sub> F <sub>3</sub> N <sub>2</sub> O <sub>6</sub> S <sub>2</sub>
Molecular Weight:	490.47
Target:	Others
Pathway:	Others
Storage:	Please store the product under the recommended conditions in the Certificate of Analysis.



## BIOLOGICAL ACTIVITY

### Description

SCP1-IN-2 (Compound SH T-65) is a potent and selective covalent inhibitor against SCP1. SCP1-IN-2 promotes REST degradation and reduces transcriptional activity. A high level of REST protein drives the tumor growth in some glioblastoma cells. SCP1-IN-2 has the potential for the research of glioblastoma whose growth is driven by REST transcription activity<sup>[1]</sup>.

## REFERENCES

[1]. Medellin B, et al. Targeted Covalent Inhibition of Small CTD Phosphatase 1 to Promote the Degradation of the REST Transcription Factor in Human Cells. *J Med Chem.* 2022;65(1):507-519.

**Caution: Product has not been fully validated for medical applications. For research use only.**

Tel: 609-228-6898

Fax: 609-228-5909

E-mail: tech@MedChemExpress.com

Address: 1 Deer Park Dr, Suite Q, Monmouth Junction, NJ 08852, USA