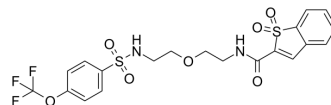


## SCP1-IN-1

Cat. No.:	HY-142682		
CAS No.:	2764615-55-4		
Molecular Formula:	C <sub>20</sub> H <sub>19</sub> F <sub>3</sub> N <sub>2</sub> O <sub>7</sub> S <sub>2</sub>		
Molecular Weight:	520.5		
Target:	Others		
Pathway:	Others		
Storage:	Powder	-20°C	3 years
		4°C	2 years
	In solvent	-80°C	6 months
		-20°C	1 month



### SOLVENT & SOLUBILITY

#### In Vitro

DMSO : 100 mg/mL (192.12 mM; Need ultrasonic)

Concentration	Mass		
	1 mg	5 mg	10 mg
1 mM	1.9212 mL	9.6061 mL	19.2123 mL
5 mM	0.3842 mL	1.9212 mL	3.8425 mL
10 mM	0.1921 mL	0.9606 mL	1.9212 mL

Please refer to the solubility information to select the appropriate solvent.

### BIOLOGICAL ACTIVITY

#### Description

SCP1-IN-1 (compound SH T-62) is a potent and selective covalent inhibitor against SCP1. SCP1-IN-1 promotes REST degradation and reduces transcriptional activity. A high level of REST protein drives the tumor growth in some glioblastoma cells. SCP1-IN-1 has the potential for the research of glioblastoma whose growth is driven by REST transcription activity<sup>[1]</sup>.

### REFERENCES

[1]. Medellin B, et al. Targeted Covalent Inhibition of Small CTD Phosphatase 1 to Promote the Degradation of the REST Transcription Factor in Human Cells. *J Med Chem.* 2022;65(1):507-519.

---

**Caution: Product has not been fully validated for medical applications. For research use only.**

Tel: 609-228-6898

Fax: 609-228-5909

E-mail: [tech@MedChemExpress.com](mailto:tech@MedChemExpress.com)

Address: 1 Deer Park Dr, Suite Q, Monmouth Junction, NJ 08852, USA