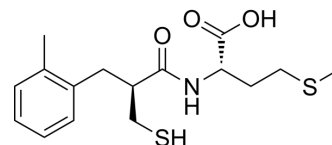


## SCH-42354

Cat. No.:	HY-106975
CAS No.:	144505-58-8
Molecular Formula:	C <sub>16</sub> H <sub>23</sub> NO <sub>3</sub> S <sub>2</sub>
Molecular Weight:	341.49
Target:	Nepriylsin
Pathway:	Metabolic Enzyme/Protease
Storage:	Please store the product under the recommended conditions in the Certificate of Analysis.



### BIOLOGICAL ACTIVITY

<b>Description</b>	SCH-42354 is a potent, orally active neutral endopeptidase (NEP) inhibitor, is the pharmacologically active form of the proagent SCH-42495. SCH-42354 inhibits the hydrolysis of NEP to enhance the activity of atrial natriuretic peptide (ANP). SCH-42354 inhibits hydrolysis of leu-enkephalin and ANF with IC <sub>50</sub> values of 8.3 nM and 10.0 nM, respectively. SCH-42354 has antihypertensive activity <sup>[1][2]</sup> .
<b>In Vitro</b>	SCH-42354 (10-100 nM) increases the potency of natriuretic peptide (ANP) in isolated pulmonary vessels and in isolated perfused whole lungs and increases ANP activity in a dose-dependent manner <sup>[1]</sup> . MCE has not independently confirmed the accuracy of these methods. They are for reference only.

### REFERENCES

[1]. Thompson JS, et, al. Neutral endopeptidase inhibition increases the potency of ANP in isolated rat pulmonary resistance vessels and isolated blood perfused lungs. *Pulm Pharmacol.* 1995 Apr-Jun;8(2-3):143-7.

[2]. Watkins RW, et, al. Atrial natriuretic factor potentiating and hemodynamic effects of SCH 42495, a new, neutral metalloendopeptidase inhibitor. *Am J Hypertens.* 1993 May;6(5 Pt 1):357-68.

**Caution: Product has not been fully validated for medical applications. For research use only.**

Tel: 609-228-6898

Fax: 609-228-5909

E-mail: tech@MedChemExpress.com

Address: 1 Deer Park Dr, Suite Q, Monmouth Junction, NJ 08852, USA