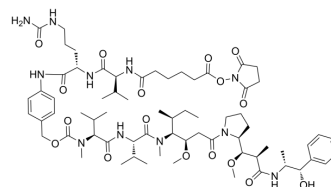


## SC-VC-PAB-MMAE

Cat. No.:	HY-126681
CAS No.:	2259318-46-0
Molecular Formula:	C <sub>68</sub> H <sub>105</sub> N <sub>11</sub> O <sub>17</sub>
Molecular Weight:	1348.62
Target:	Drug-Linker Conjugates for ADC
Pathway:	Antibody-drug Conjugate/ADC Related
Storage:	-20°C, stored under nitrogen * The compound is unstable in solutions, freshly prepared is recommended.



### SOLVENT & SOLUBILITY

#### In Vitro

DMSO : 100 mg/mL (74.15 mM; Need ultrasonic)

Preparing Stock Solutions	Solvent		1 mg	5 mg	10 mg
	Concentration	Mass			
	1 mM		0.7415 mL	3.7075 mL	7.4150 mL
	5 mM		0.1483 mL	0.7415 mL	1.4830 mL
	10 mM		0.0741 mL	0.3707 mL	0.7415 mL

Please refer to the solubility information to select the appropriate solvent.

### BIOLOGICAL ACTIVITY

#### Description

SC-VC-PAB-MMAE is a agent-linker conjugate for ADC with potent antitumor activity by using the anti-mitotic agent, monomethyl auristatin E (MMAE, a tubulin inhibitor), linked via the cleavable linker SC-VC-PAB<sup>[1]</sup>.

#### IC<sub>50</sub> & Target

Auristatin

### CUSTOMER VALIDATION

- J Pharm Sci. 2023 Dec 7:S0022-3549(23)00511-7.

See more customer validations on [www.MedChemExpress.com](http://www.MedChemExpress.com)

### REFERENCES

**Caution: Product has not been fully validated for medical applications. For research use only.**

Tel: 609-228-6898

Fax: 609-228-5909

E-mail: [tech@MedChemExpress.com](mailto:tech@MedChemExpress.com)

Address: 1 Deer Park Dr, Suite Q, Monmouth Junction, NJ 08852, USA