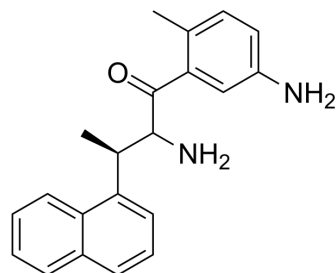


## SARS-CoV-2-IN-23

Cat. No.:	HY-150789
Molecular Formula:	C <sub>21</sub> H <sub>22</sub> N <sub>2</sub> O
Molecular Weight:	318.41
Target:	SARS-CoV
Pathway:	Anti-infection
Storage:	Please store the product under the recommended conditions in the Certificate of Analysis.



### BIOLOGICAL ACTIVITY

Description	SARS-CoV-2-IN-23 (compound GRL-0617) is a SARS-COV-2 papain-like protease (PLpro) inhibitor with an IC <sub>50</sub> value of 2.3 μM [1].
IC <sub>50</sub> & Target	IC <sub>50</sub> : 2.3 μM (SARS-COV-2 PLpro) <sup>[1]</sup>

### REFERENCES

[1]. Ferreira GM, et al. Inhibitor induced conformational changes in SARS-COV-2 papain-like protease. Sci Rep. 2022 Jul 8;12(1):11585.

**Caution: Product has not been fully validated for medical applications. For research use only.**

Tel: 609-228-6898

Fax: 609-228-5909

E-mail: tech@MedChemExpress.com

Address: 1 Deer Park Dr, Suite Q, Monmouth Junction, NJ 08852, USA