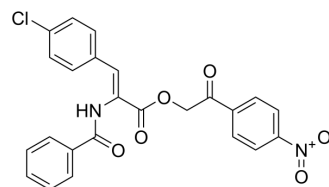


SARS-CoV-2 3CLpro-IN-7

Cat. No.:	HY-152009
CAS No.:	1164478-67-4
Molecular Formula:	C ₂₄ H ₁₇ ClN ₂ O ₆
Molecular Weight:	464.85
Target:	SARS-CoV
Pathway:	Anti-infection
Storage:	Please store the product under the recommended conditions in the Certificate of Analysis.



BIOLOGICAL ACTIVITY

Description	SARS-CoV-2 3CLpro-IN-7 is a reversible covalent SARS-CoV-2 3CL protease inhibitor with an IC ₅₀ value of 1.4 μM ^[1] .
In Vitro	SARS-CoV-2 3CLpro-IN-7 (0-100 μM; 5, 30, 60, 180 min) inhibits SARS-CoV-2 3CL ^{Pro} in a dose and time dependent manner ^[1] . MCE has not independently confirmed the accuracy of these methods. They are for reference only.

REFERENCES

[1]. Wang L, et al. Discovery of novel SARS-CoV-2 3CL protease covalent inhibitors using deep learning-based screen. Eur J Med Chem. 2022 Dec 15;244:114803.

Caution: Product has not been fully validated for medical applications. For research use only.

Tel: 609-228-6898

Fax: 609-228-5909

E-mail: tech@MedChemExpress.com

Address: 1 Deer Park Dr, Suite Q, Monmouth Junction, NJ 08852, USA