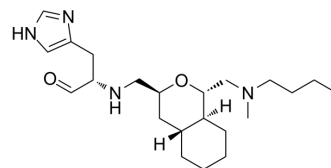


## SARS 3CLpro-IN-1

Cat. No.:	HY-150691
CAS No.:	2409178-86-3
Molecular Formula:	C <sub>22</sub> H <sub>38</sub> N <sub>4</sub> O <sub>2</sub>
Molecular Weight:	390.56
Target:	SARS-CoV
Pathway:	Anti-infection
Storage:	Please store the product under the recommended conditions in the Certificate of Analysis.



### BIOLOGICAL ACTIVITY

<b>Description</b>	SARS 3CLpro-IN-1 (Compound 3b) is a SARS 3CL protease inhibitor with an IC <sub>50</sub> value of 95 μM, as a specific stereo isomer of the octahydroisochromene scaffold, directs the P1 site imidazole <sup>[1]</sup> .
<b>IC<sub>50</sub> &amp; Target</b>	IC <sub>50</sub> : 95 μM (SARS 3CL protease) <sup>[1]</sup>
<b>In Vitro</b>	SARS 3CLpro-IN-1 (Compound 3b) has high active (IC <sub>50</sub> =95 μM) and had a (1S, 3S)-configuration in the ring system <sup>[1]</sup> . MCE has not independently confirmed the accuracy of these methods. They are for reference only.

### REFERENCES

[1]. Shin-Ichiro Yoshizawa, et al. Evaluation of an octahydroisochromene scaffold used as a novel SARS 3CL protease inhibitor. Bioorg Med Chem. 2020 Feb 15;28(4):115273.

**Caution: Product has not been fully validated for medical applications. For research use only.**

Tel: 609-228-6898

Fax: 609-228-5909

E-mail: tech@MedChemExpress.com

Address: 1 Deer Park Dr, Suite Q, Monmouth Junction, NJ 08852, USA