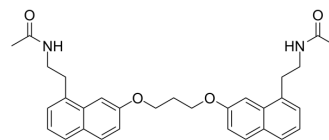


S26131

Cat. No.:	HY-122136		
CAS No.:	296280-56-3		
Molecular Formula:	C ₃₁ H ₃₄ N ₂ O ₄		
Molecular Weight:	498.61		
Target:	Melatonin Receptor		
Pathway:	GPCR/G Protein; Neuronal Signaling		
Storage:	Powder	-20°C	3 years
		4°C	2 years
	In solvent	-80°C	6 months
		-20°C	1 month



SOLVENT & SOLUBILITY

In Vitro

DMSO : 31.25 mg/mL (62.67 mM); ultrasonic and warming and heat to 60°C)

Preparing Stock Solutions	Solvent	Mass	1 mg	5 mg	10 mg
	Concentration				
	1 mM		2.0056 mL	10.0279 mL	20.0558 mL
	5 mM		0.4011 mL	2.0056 mL	4.0112 mL
	10 mM		0.2006 mL	1.0028 mL	2.0056 mL

Please refer to the solubility information to select the appropriate solvent.

In Vivo

- Add each solvent one by one: 10% DMSO >> 40% PEG300 >> 5% Tween-80 >> 45% saline
Solubility: ≥ 1.25 mg/mL (2.51 mM); Clear solution
- Add each solvent one by one: 10% DMSO >> 90% (20% SBE-β-CD in saline)
Solubility: 1.25 mg/mL (2.51 mM); Suspended solution; Need ultrasonic
- Add each solvent one by one: 10% DMSO >> 90% corn oil
Solubility: ≥ 1.25 mg/mL (2.51 mM); Clear solution

BIOLOGICAL ACTIVITY

Description

S26131 (compound 5) is a potent and selective MT1 melatonergic ligand, and the K_i values are 0.5 and 112 nM for MT1 and MT2, respectively. S26131 behaves as an MT1 and MT2 antagonist^[1].

In Vitro

S26131 behaves as an antagonist on MT1 and MT2 receptors with KB values of 5.32 and 143 nM, respectively^[1]. MCE has not independently confirmed the accuracy of these methods. They are for reference only.

CUSTOMER VALIDATION

- J Pineal Res. 2022 Sep 15.
- J Nanobiotechnology. 2021 Sep 4;19(1):263.
- Int J Biol Sci. 2022 Mar 6;18(5):2202-2219.
- Front Pharmacol. 2021 Sep 16;12:719313.
- Eur J Pharmacol. 2021 Oct 23;174589.

See more customer validations on www.MedChemExpress.com

REFERENCES

[1]. Descamps-François C, et al. Design and synthesis of naphthalenic dimers as selective MT1 melatonergic ligands. J Med Chem. 2003 Mar 27;46(7):1127-9.

Caution: Product has not been fully validated for medical applications. For research use only.

Tel: 609-228-6898

Fax: 609-228-5909

E-mail: tech@MedChemExpress.com

Address: 1 Deer Park Dr, Suite Q, Monmouth Junction, NJ 08852, USA