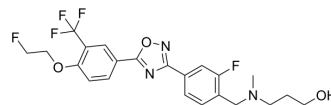


S1PR1 Radioligand 1

Cat. No.:	HY-149210
CAS No.:	2845249-11-6
Molecular Formula:	C ₂₂ H ₂₂ F ₅ N ₃ O ₃
Molecular Weight:	471.42
Target:	LPL Receptor
Pathway:	GPCR/G Protein
Storage:	Please store the product under the recommended conditions in the Certificate of Analysis.



BIOLOGICAL ACTIVITY

Description	S1PR1 Radioligand 1 (compound 6 h) is a specific S1PR1 radioligand with IC ₅₀ = 8.7 nM. S1PR1 Radioligand 1 has good brain uptake and can be used as a S1PR1-specific F-18 radiotracer for studying the function of S1PR1 in brain diseases ^[1] .
In Vivo	The uptake of S1PR1 Radioligand 1 (compound 6 h) in the lung, liver and kidney of SD rats was relatively high. Among them, the lung uptake is the highest, which is 9.32±0.94 (%ID/g), followed by the liver, kidney, spleen, pancreas, heart and small intestine, which are 4.57±0.16, 3.57±0.17, 1.90±0.32, 1.68±0.14, 1.41± 0.10 and 1.06±0.19(%ID/g) ^[1] . MCE has not independently confirmed the accuracy of these methods. They are for reference only.

REFERENCES

[1]. Lin Qiu, et al. Discovery of a Promising Fluorine-18 Positron Emission Tomography Radiotracer for Imaging Sphingosine-1-Phosphate Receptor 1 in the Brain. J Med Chem. 2023 Mar 16.

Caution: Product has not been fully validated for medical applications. For research use only.

Tel: 609-228-6898

Fax: 609-228-5909

E-mail: tech@MedChemExpress.com

Address: 1 Deer Park Dr, Suite Q, Monmouth Junction, NJ 08852, USA