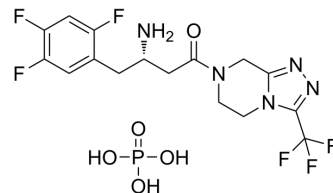


(S)-Sitagliptin phosphate

Cat. No.:	HY-13749C
CAS No.:	823817-58-9
Molecular Formula:	C ₁₆ H ₁₈ F ₆ N ₅ O ₅ P
Molecular Weight:	505.31
Target:	Dipeptidyl Peptidase; Autophagy
Pathway:	Metabolic Enzyme/Protease; Autophagy
Storage:	Please store the product under the recommended conditions in the Certificate of Analysis.



BIOLOGICAL ACTIVITY

Description	(S)-Sitagliptin phosphate is the less active S-enantiomer of Sitagliptin phosphate. Sitagliptin phosphate (MK-0431 phosphate) is a potent inhibitor of DPP4 with an IC ₅₀ of 19 nM in Caco-2 cell extracts ^[1] .
IC ₅₀ & Target	DPP-4

REFERENCES

[1]. Chi-Hung Ho, et al. Biocatalytic Continuous Manufacturing of Diabetes Drug: Plantwide Process Modeling, Optimization, and Environmental and Economic Analysis. ACS Sustainable Chem. Eng. 2019, 7, 1, 1038-1051.

Caution: Product has not been fully validated for medical applications. For research use only.

Tel: 609-228-6898

Fax: 609-228-5909

E-mail: tech@MedChemExpress.com

Address: 1 Deer Park Dr, Suite Q, Monmouth Junction, NJ 08852, USA