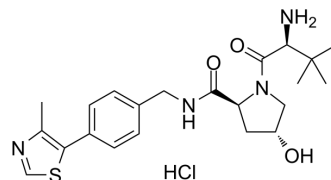


(S,R,S)-AHPC monohydrochloride

Cat. No.:	HY-101763A
CAS No.:	1448189-80-7
Molecular Formula:	C ₂₂ H ₃₁ ClN ₄ O ₃ S
Molecular Weight:	467.02
Target:	Ligands for E3 Ligase
Pathway:	PROTAC
Storage:	-20°C, stored under nitrogen * In solvent : -80°C, 6 months; -20°C, 1 month (stored under nitrogen)



SOLVENT & SOLUBILITY

In Vitro

DMSO : 125 mg/mL (267.65 mM; Need ultrasonic)
H₂O : 100 mg/mL (214.12 mM; Need ultrasonic)

Preparing Stock Solutions	Solvent Concentration	Mass		
		1 mg	5 mg	10 mg
	1 mM	2.1412 mL	10.7062 mL	21.4124 mL
	5 mM	0.4282 mL	2.1412 mL	4.2825 mL
	10 mM	0.2141 mL	1.0706 mL	2.1412 mL

Please refer to the solubility information to select the appropriate solvent.

In Vivo

- Add each solvent one by one: PBS
Solubility: 100 mg/mL (214.12 mM); Clear solution; Need ultrasonic
- Add each solvent one by one: 10% DMSO >> 40% PEG300 >> 5% Tween-80 >> 45% saline
Solubility: ≥ 2.08 mg/mL (4.45 mM); Clear solution
- Add each solvent one by one: 10% DMSO >> 90% (20% SBE-β-CD in saline)
Solubility: ≥ 2.08 mg/mL (4.45 mM); Clear solution
- Add each solvent one by one: 10% DMSO >> 90% corn oil
Solubility: ≥ 2.08 mg/mL (4.45 mM); Clear solution

BIOLOGICAL ACTIVITY

Description

(S,R,S)-AHPC (VH032-NH₂) hydrochloride is the VH032-based VHL ligand used in the recruitment of the von Hippel-Lindau (VHL) protein. (S,R,S)-AHPC hydrochloride can be connected to the ligand for protein (e.g., BCR-ABL1) by a linker to form PROTACs (e.g., GMB-475). GMB-475 induces the degradation of BCR-ABL1 with an IC₅₀ of 1.11 μM in Ba/F3 cells^[1].

IC₅₀ & Target

VHL

CUSTOMER VALIDATION

- Department of Chemistry. 2020 Aug 10.

See more customer validations on www.MedChemExpress.com

REFERENCES

- [1]. Buckley DL, et al. HaloPROTACS: Use of Small Molecule PROTACs to Induce Degradation of HaloTag Fusion Proteins. ACS Chem Biol. 2015 Aug 21;10(8):1831-7.
-

Caution: Product has not been fully validated for medical applications. For research use only.

Tel: 609-228-6898

Fax: 609-228-5909

E-mail: tech@MedChemExpress.com

Address: 1 Deer Park Dr, Suite Q, Monmouth Junction, NJ 08852, USA