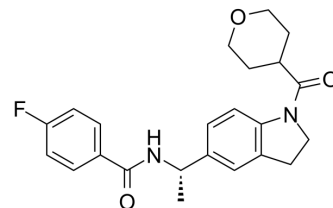


(S)-LY-3381916

Cat. No.:	HY-111540B		
CAS No.:	2166616-76-6		
Molecular Formula:	C ₂₃ H ₂₅ FN ₂ O ₃		
Molecular Weight:	396.45		
Target:	Indoleamine 2,3-Dioxygenase (IDO)		
Pathway:	Metabolic Enzyme/Protease		
Storage:	Powder	-20°C	3 years
		4°C	2 years
	In solvent	-80°C	2 years
		-20°C	1 year



SOLVENT & SOLUBILITY

In Vitro

DMSO : 300 mg/mL (756.72 mM; Need ultrasonic)

Concentration	Solvent	Mass	1 mg	5 mg	10 mg
			1 mg	5 mg	10 mg
Preparing Stock Solutions	1 mM		2.5224 mL	12.6119 mL	25.2239 mL
	5 mM		0.5045 mL	2.5224 mL	5.0448 mL
	10 mM		0.2522 mL	1.2612 mL	2.5224 mL

Please refer to the solubility information to select the appropriate solvent.

In Vivo

- Add each solvent one by one: 10% DMSO >> 40% PEG300 >> 5% Tween-80 >> 45% saline
Solubility: ≥ 7.5 mg/mL (18.92 mM); Clear solution
- Add each solvent one by one: 10% DMSO >> 90% (20% SBE-β-CD in saline)
Solubility: ≥ 7.5 mg/mL (18.92 mM); Clear solution
- Add each solvent one by one: 10% DMSO >> 90% corn oil
Solubility: ≥ 7.5 mg/mL (18.92 mM); Clear solution

BIOLOGICAL ACTIVITY

Description

(S)-LY-3381916 ((S)-IDO1-IN-5; Example 1B) is an active S-isomer of LY-3381916. (S)-LY-3381916 binds to IDOL with an IC₅₀ value less than 1.5 μM^[1]. LY-3381916 is a potent, selective and brain penetrated inhibitor of Indoleamine 2,3-Dioxygenase 1 (IDO1) activity, binds to apo-IDO1 lacking heme rather than mature heme-bound IDO1^[2].

CUSTOMER VALIDATION

-
- The University of Auckland. 2023 Mar.

See more customer validations on www.MedChemExpress.com

REFERENCES

- [1]. Frank C. Dorsey, et al. Abstract 5245: Identification and characterization of the IDO1 inhibitor LY3381916. Cancer Research. 2018, 78(13).
- [2]. Jolie Anne Bastian, et al. 1-tetrahydropyran-2-yl-3,4-dihydro-1H-indole compounds for treating cancer. WO2017213919A1.
-

Caution: Product has not been fully validated for medical applications. For research use only.

Tel: 609-228-6898

Fax: 609-228-5909

E-mail: tech@MedChemExpress.com

Address: 1 Deer Park Dr, Suite Q, Monmouth Junction, NJ 08852, USA