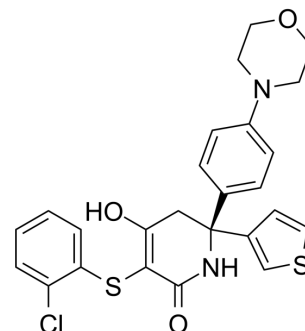


## (S)-GNE-140

<b>Cat. No.:</b>	HY-100742B		
<b>CAS No.:</b>	2003234-64-6		
<b>Molecular Formula:</b>	C <sub>25</sub> H <sub>23</sub> ClN <sub>2</sub> O <sub>3</sub> S <sub>2</sub>		
<b>Molecular Weight:</b>	499.04		
<b>Target:</b>	Lactate Dehydrogenase		
<b>Pathway:</b>	Metabolic Enzyme/Protease		
<b>Storage:</b>	Powder	-20°C	3 years
		4°C	2 years
	In solvent	-80°C	2 years
		-20°C	1 year



### SOLVENT & SOLUBILITY

#### In Vitro

DMSO : 14.43 mg/mL (28.92 mM; Need ultrasonic)

Concentration	Solvent	Mass		
		1 mg	5 mg	10 mg
Preparing Stock Solutions	1 mM	2.0038 mL	10.0192 mL	20.0385 mL
	5 mM	0.4008 mL	2.0038 mL	4.0077 mL
	10 mM	0.2004 mL	1.0019 mL	2.0038 mL

Please refer to the solubility information to select the appropriate solvent.

### BIOLOGICAL ACTIVITY

#### Description

(S)-GNE-140 is the less active enantiomer of GNE-140 which can inhibit Lactate dehydrogenase A (LDHA).

#### IC<sub>50</sub> & Target

LDHA<sup>[1]</sup>

### REFERENCES

[1]. Purkey HE, et al. Cell Active Hydroxylactam Inhibitors of Human Lactate Dehydrogenase with Oral Bioavailability in Mice. ACS Med Chem Lett. 2016 Aug 26;7(10):896-901.

---

**Caution: Product has not been fully validated for medical applications. For research use only.**

Tel: 609-228-6898

Fax: 609-228-5909

E-mail: [tech@MedChemExpress.com](mailto:tech@MedChemExpress.com)

Address: 1 Deer Park Dr, Suite Q, Monmouth Junction, NJ 08852, USA