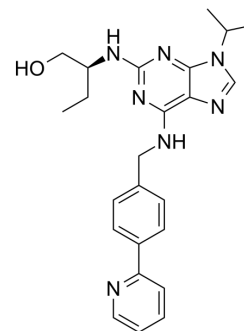


(S)-CR8

Cat. No.:	HY-112371		
CAS No.:	1084893-56-0		
Molecular Formula:	C ₂₄ H ₂₉ N ₇ O		
Molecular Weight:	431.53		
Target:	CDK		
Pathway:	Cell Cycle/DNA Damage		
Storage:	Powder	-20°C	3 years
	In solvent	-80°C	6 months
		-20°C	1 month



BIOLOGICAL ACTIVITY

Description

(S)-CR8 is the S-isomer of CR8. (S)-CR8 is a potent and selective CDK inhibitor with IC₅₀s of 0.060, 0.080, 0.11, 0.12, and 0.15 μM for CDK2/cyclin E, CDK2/cyclin A, CDK9/cyclin T, CDK5/p25, and CDK1/cyclin B, respectively. (S)-CR8 reduces SH-SY5Y cells survival (IC₅₀ 0.40 μM)^[1].

REFERENCES

[1]. K Bettayeb, et al. CR8, a potent and selective, roscovitine-derived inhibitor of cyclin-dependent kinases. *Oncogene*. 2008 Oct 2;27(44):5797-807.

Caution: Product has not been fully validated for medical applications. For research use only.

Tel: 609-228-6898

Fax: 609-228-5909

E-mail: tech@MedChemExpress.com

Address: 1 Deer Park Dr, Suite Q, Monmouth Junction, NJ 08852, USA