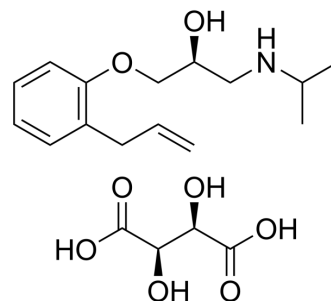


(S)-Alprenolol L-tartrate

Cat. No.:	HY-121692A
CAS No.:	16768-36-8
Molecular Formula:	C ₁₉ H ₂₉ NO ₈
Molecular Weight:	399.44
Target:	Adrenergic Receptor
Pathway:	GPCR/G Protein; Neuronal Signaling
Storage:	Please store the product under the recommended conditions in the Certificate of Analysis.



BIOLOGICAL ACTIVITY

Description

(S)-Alprenolol is a potent and nonselective β -adrenoceptor antagonist^[1].

REFERENCES

[1]. K M Höld, et al. Enantioselective quantitation of (R)- and (S)-alprenolol by gas chromatography-mass spectrometry in human saliva an plasma. J Chromatogr Sci. 1996 Jan;34(1):13-9.

Caution: Product has not been fully validated for medical applications. For research use only.

Tel: 609-228-6898

Fax: 609-228-5909

E-mail: tech@MedChemExpress.com

Address: 1 Deer Park Dr, Suite Q, Monmouth Junction, NJ 08852, USA