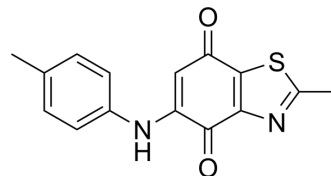


Ryuvidine

Cat. No.:	HY-100624
CAS No.:	265312-55-8
Molecular Formula:	C ₁₅ H ₁₂ N ₂ O ₂ S
Molecular Weight:	284.33
Target:	CDK
Pathway:	Cell Cycle/DNA Damage
Storage:	Please store the product under the recommended conditions in the Certificate of Analysis.



BIOLOGICAL ACTIVITY

Description	Ryuvidine is a potent inhibitor of SET domain-containing protein 8 (SETD8) with an IC ₅₀ of 0.5 μM and suppresses monomethylation of H ₄ K ₂₀ in vitro ^[1] . Ryuvidine also inhibits CDK4 with an IC ₅₀ of 6.0 μM and is cytotoxic against a range of human cancer cells ^[2] .
IC ₅₀ & Target	CDK4 6.0 μM (IC ₅₀)

REFERENCES

- [1]. Ryu CK, et al. 5-Arylamino-2-methyl-4,7-dioxobenzothiazoles as inhibitors of cyclin-dependent kinase 4 and cytotoxic agents. *Bioorg Med Chem Lett*. 2000 Mar 6;10(5):461-4.
- [2]. Blum G, et al. Small-molecule inhibitors of SETD8 with cellular activity. *ACS Chem Biol*. 2014 Nov 21;9(11):2471-8.

Caution: Product has not been fully validated for medical applications. For research use only.

Tel: 609-228-6898

Fax: 609-228-5909

E-mail: tech@MedChemExpress.com

Address: 1 Deer Park Dr, Suite Q, Monmouth Junction, NJ 08852, USA