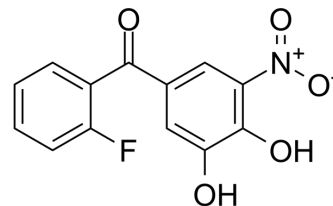


Ro 41-0960

Cat. No.:	HY-125339	
CAS No.:	125628-97-9	
Molecular Formula:	C ₁₃ H ₈ FNO ₅	
Molecular Weight:	277.2	
Target:	COMT	
Pathway:	Metabolic Enzyme/Protease; Neuronal Signaling	
Storage:	Powder	-20°C 3 years
	In solvent	-80°C 6 months
		-20°C 1 month



SOLVENT & SOLUBILITY

In Vitro

DMSO : 20 mg/mL (72.15 mM; Need ultrasonic and warming)

Concentration	Mass		
	1 mg	5 mg	10 mg
1 mM	3.6075 mL	18.0375 mL	36.0750 mL
5 mM	0.7215 mL	3.6075 mL	7.2150 mL
10 mM	0.3608 mL	1.8038 mL	3.6075 mL

Please refer to the solubility information to select the appropriate solvent.

BIOLOGICAL ACTIVITY

Description

Ro 41-0960 is a selective catechol-O-methyltransferase(COMT) inhibitor^[1].

REFERENCES

[1]. Storch A, et al. Catechol-O-methyltransferase inhibition attenuates levodopa toxicity in mesencephalic dopamine neurons. Mol Pharmacol. 2000 Mar;57(3):589-94.

Caution: Product has not been fully validated for medical applications. For research use only.

Tel: 609-228-6898

Fax: 609-228-5909

E-mail: tech@MedChemExpress.com

Address: 1 Deer Park Dr, Suite Q, Monmouth Junction, NJ 08852, USA