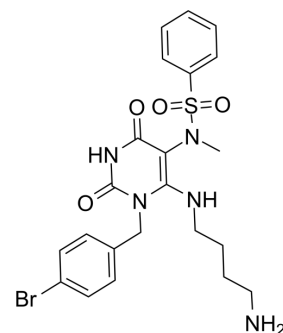


## RmlA-IN-2

Cat. No.:	HY-146551
CAS No.:	2866140-40-9
Molecular Formula:	C <sub>22</sub> H <sub>26</sub> BrN <sub>5</sub> O <sub>4</sub> S
Molecular Weight:	536.44
Target:	Bacterial
Pathway:	Anti-infection
Storage:	Please store the product under the recommended conditions in the Certificate of Analysis.



### BIOLOGICAL ACTIVITY

#### Description

RmlA-IN-2 (Compound 1d) is a potent inhibitor of glucose-1-phosphate thymidyltransferase (RmlA) with an IC<sub>50</sub> of 0.303 μM. RmlA-IN-2 influences monosaccharide l-Rhamnose biosynthetic pathway. RmlA-IN-2 affects bacterial cell wall permeability<sup>[1]</sup>.

### REFERENCES

[1]. Xiao G, et al. Next generation Glucose-1-phosphate thymidyltransferase (RmlA) inhibitors: An extended SAR study to direct future design. *Bioorg Med Chem.* 2021;50:116477.

**Caution: Product has not been fully validated for medical applications. For research use only.**

Tel: 609-228-6898

Fax: 609-228-5909

E-mail: tech@MedChemExpress.com

Address: 1 Deer Park Dr, Suite Q, Monmouth Junction, NJ 08852, USA