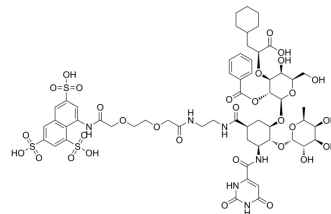


## Rivipansel

Cat. No.:	HY-125475
CAS No.:	927881-99-0
Molecular Formula:	C <sub>58</sub> H <sub>74</sub> N <sub>6</sub> O <sub>31</sub> S <sub>3</sub>
Molecular Weight:	1447.42
Target:	Others
Pathway:	Others
Storage:	Please store the product under the recommended conditions in the Certificate of Analysis.



### BIOLOGICAL ACTIVITY

#### Description

Rivipansel (GMI-1070) is a potent E-selectin antagonist. Rivipansel prevents interaction between leukocytes and vascular endothelium. Rivipansel has the potential for the research of sickle cell vaso-occlusive crisis<sup>[1][2]</sup>.

### REFERENCES

- [1]. Dampier CD, et al. A Randomized Clinical Trial of the Efficacy and Safety of Rivipansel for Sickle Cell Vaso-occlusive Crisis (VOC). *Blood*. 2022 Aug 18;blood.2022015797.
- [2]. Carlton D.DampierMD, et al. Early Initiation of Treatment with Rivipansel for Acute Vaso-Occlusive Crisis in Sickle Cell Disease (SCD) Achieves Earlier Discontinuation of IV Opioids and Shorter Hospital Stay: Reset Clinical Trial Analysis. *Blood*, 2020, 136 (1):18-19.

**Caution: Product has not been fully validated for medical applications. For research use only.**

Tel: 609-228-6898

Fax: 609-228-5909

E-mail: tech@MedChemExpress.com

Address: 1 Deer Park Dr, Suite Q, Monmouth Junction, NJ 08852, USA